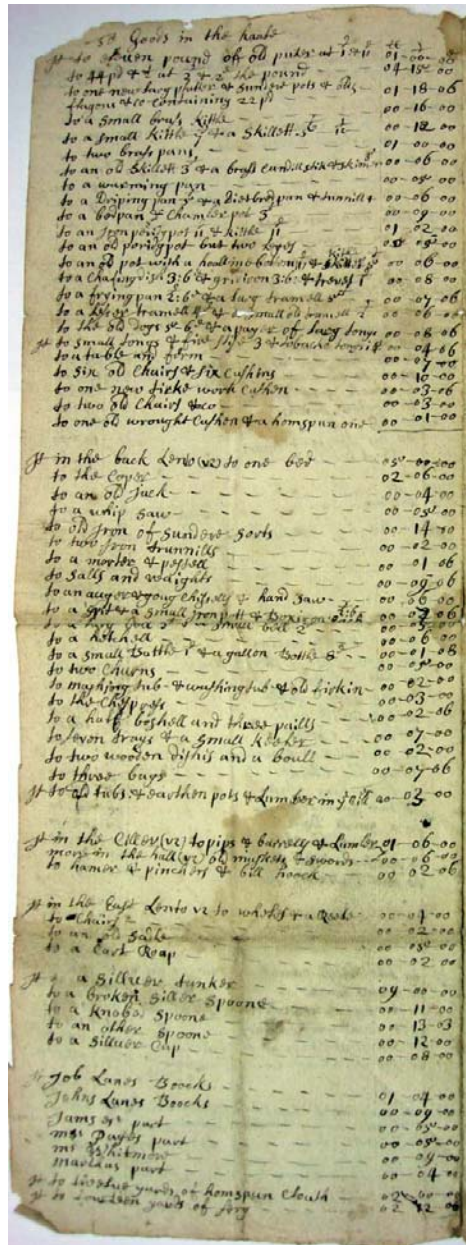


An Inventory of all the goods chattels & credits of John Lane Gentleman desayesd [deceased] prised [appraised] at Billryca february the 15<sup>th</sup> 1713:14 –

		£	s	p
Impri his cash		15	15	00
It	to a dark colored cersey coat	02	15	00
	to a light collared coat	01	10	00
It	to a serg coat	01	10	00
	to an old light colored cersey coat	00	15	00
	to an other old coat w/ black cuffs	00	07	00
It	to a homspun coat	00	01	00
It	to an old grate coat	00	10	00
It	to an old cloak	00	07	00
	to a black serg jacket	00	18	00
It	to a cersey jacket w/ a sillver chain	00	18	00
	to a Druggit jacket	00	11	00
	to a homespun jacket	00	09	00
	to an old Druget jacket	00	03	00
	to leather brichis w/ silver buttonry	00	12	00
	more to old leather brichis	00	03	00
It	to black serg brichis	00	06	00
	to cersey brichis	00	04	00
	to his hatt	00	10	00
	to his boots & spurs	01	06	00
	Boots of his	00	05	00
It	his wiggs	00	15	00
It	his canne	00	18	00
It	to boocks	02	16	00
		<hr/>		
		31	14	00
It	to his hors	10	00	00
It	to firniture & Armes	08	15	00
	to his bells & saddell[?]	00	02	06
	books	02	16	00
		21	13	06

It	to goods in the <b>west room below:</b>			
	to one bed & bedding		10	00
	to Jamses bed w/ the tester	05	15	00
	to the cubbord		01	12
	to the square table		00	10
	to the ovill table		00	16
	to an old chest		00	06
	to six chairs at 4 <sup>+</sup> each		01	04
	to an old clock		03	00
	to the looking glass		00	05
	to two small trunks		00	04
	to a small desk		00	02
	to a small old chest		00	01
	to Andirons and old tongs		00	10
	to one case of knives		00	09
It	in the <b>west chamber</b> is one bed & co		10	10
	to a new trunk		00	10
	to a chest & an old trunk		00	05
	to 4 terke work chairs		01	10
	to six new chairs at 4s each		01	04
	to joyned stooles covered w/ serg		00	02
It	to goods in the <b>east chamber</b> (ie) to one bed with the bedding belonging to it		02	10
	to a small bed: two old covers & old curtains		01	18
	to six chairs covered w/ serg		00	15
	to two small shests & old chairs		00	02



[Page 2]

	To Goods in the house			
It	to eleven pounds of old puter at 1 & 10	01	00	00
	to 44pd & 1/2 at 2 & 2 the pound	04	15	00
	to one new large platter & sundere pots & old flagons & c containing 22pd	01	18	06
	to small brass kittle	00	16	00
	to a small kittle & a skillett	00	12	00
	to two brass pans	01	00	00
	to an old skillett 3 & a brass candill stik & skiener	00	06	00
	to a warming pan	00	05	00
	to a Dripping pan & a dietbred pan & trinnill	00	06	00
	to a bedpan & chamberpot 3 <sup>p</sup>	00	09	00
	to an iron porridge pot 11 & kettle 11	01	02	00
	to an old porridge pot but two leges	00	05	00
	to an old pot with a hoall in the bottom & kittle & skillett	00	06	00
	to a chafing dish 3:6 & gridiron 3:6 & treves 1	00	08	00
	to a frying pan 2:6 & a larg tramell	00	07	06
	to a lesser tramell & a small old tramell	00	06	00
	to the old dogs 5 <sup>e</sup> - 6 <sup>e</sup> & a payer of larg tongs	00	08	06
It	to small tongs & five stisre 3 & tobacco tongs	00	04	06
	to a table and form	00	07	00
	to six old chairs & six cushens	00	10	00
	to one new ticked work cushen	00	03	06
	to two old chairs & co	00	03	00
	to one old wrought cushen & a homspun one	00	01	00
It	in the <b>back lento</b> (1/2) to one bed	05	00	00
	to the copper	02	06	00
	to an old jack	00	04	00
	to a whip saw	00	05	00
	to old iron of sundere [sundry] sorts	00	14	00
	to two iron trunnills	00	02	00
	to a mortar & pestell	00	01	06
	to salls and waights	00	09	06
	to an auger & goug chissell & hand saw	00	06	00
	to a spit & a small iron pott & Boxiron each	00	07	06
	to a large bell 3' and a small bell 2'	00	05	00
	to a hetchell	00	06	00
	to a small bottle 1s & a gallon bottle 8d	00	01	08

	to two churns	00	05	00
	to mashing tub & washing tub & old firkin	00	02	00
	to the ches press	00	03	00
	to a half bushell and three pails	00	02	00
	to seven trays & a small kooker[?]	00	07	00
	to two wooden dishis and a boull	00	02	00
	to three bags	00	07	06
It	to old tubs & earthen pots & lumber in the <b>ciller</b>	00	03	00
It	in the <b>ciller</b> [cellar] (1/2) to pips & barrels & lumber	01	06	00
	more in the <b>hall</b> (1/2) old muskets & swords	00	06	00
	to hamer & pinchers & bill hooock	00	02	06
It	in the <b>east lonto</b> 1/2 to wheles & a reele	00	04	00
	to chairs	00	02	00
	to an old salle	00	05	00
	to a cart roap	00	02	00
It	to a sillver tanker	09	00	00
	to a broken sillver spoon	00	11	00
	to a knobed spoon	00	13	03
	to an other spoon	00	12	00
	to a sillver cup	00	08	00
It	Job Lanes Boocks	01	04	00
	Johns Lanes Boocks	00	09	00
	Jameses part	00	05	00
	Ms Pages <sup>1</sup> part	00	05	00
	Ms Whitmore <sup>2</sup>	00	09	00
	Marthas <sup>3</sup> part	00	04	00
It	to twelve yards of homspun cloath	02	00	00
It	to fourteen yards of serg	02	12	06

---

<sup>1</sup> Susanna Lane Page, John (2) Lane's oldest daughter daughter

<sup>2</sup> Mary Lane Whitmore, John's second daughter

<sup>3</sup> Martha Lane, John's youngest daughter

# The Lane Family Papers

# Bedford Historical Society



	£	s	p
To the quick stock [livestock]			
It to one old mare	02	10	00
to the old oxen	11	05	00
to one payer of stags [hogs]	09	00	00
to one ox of six year old	04	05	00
to one payer of small red sters coming <sup>3</sup> :	04	15	00
to two sters coming two year old	04	00	00
to a lame cow with her calf	03	15	00
to a black cow called slick	04	00	00
to a black cow called tag	03	05	00
to a read straight hornd cow	03	05	00
to a bobtailled heifer w/ calf	03	00	00
to a read heifer coming three	02	10	00
to a read heifer & a black heifer coming 2	03	04	00
to two callves one red & the other black	01	15	00
It to ten sheep & a ram	04	03	00
to one old sow 28s & a smaller sow 18s	02	06	00
to fouer larg shoats and one small shoat	02	14	00
It to Jobs stock: 1/2 one payer [pair] of oxen	08	10	00
to one cow	03	10	00
to two callves	02	00	00
to five sheep	01	10	00
to three small swine	00	15	00
to Jobs plow / seven shillings	00	07	00
It to Johns stock - (1/2) his oxen	08	00	00
to one cow	03	10	00
to two callves	02	15	00
to 4 sheep	01	04	00
to three small swine	01	04	00
It to James stock (1/2) one cow	03	05	00
to five sheep	01	07	00
to one pig	00	05	00
It to a cart with iron bound wheels			
to one yoak & span shalke & pini: all	05	00	00
to the irons of the breeking up plow	00	16	00

# The Lane Family Papers

# Bedford Historical Society

	to the timber chain	00	18	00
	to a plow chain w/ two hooks	00	06	00
	to a small chain w/ butt one hook	00	05	00
	to a broken chain	00	06	00
	to the horse traisses & harness	00	10	00
	to two payer of botle rings	00	04	00
	to five wedges	00	05	00
	to two youks, hooocks & staples	00	04	00
It	to a broad ax	00	07	00
	to two narrow axes	00	03	06
	to a shave	00	03	00
	to a twi bill	00	02	06
	to a holing ax	00	04	00
It	to a frow & old spade & two forks	00	06	00
	to an old cart & whells & old tumberill	01	02	00
	to a shovell	00	02	00
	to one payer of fetters	00	03	00
	to an old shead	00	02	00
	to a grind-stone redy hanged	00	12	00
	to an old iron harrow	00	06	00
	to an old horse plow	00	02	06
	to a plow with a broken shear	00	03	06
	to an old ax	00	01	00
		<hr/>		
	Supose the seven hundred acres of land			
	with the building & saw mill &co [etc.]	1100	00	00
	the great meadow	0112	00	00
	to seventy one acres & 41 of upland	0035	12	00
		<hr/>		
		1247	12	00
	the moveable estate a bought [about]	0263	10	05
	(The gold rings not reckened)			
		<u>1247</u>	<u>12</u>	<u>00</u>
	Sum Total a bought [about]	1511	02	05